



*The Pride*

Flexibility and exclusivity.  
Design your home, your way.

# Welcome to *The Pride*

## *The comfort of reliability*



A Fantasy of lavish living translated into concrete reality. This work of art has its accent on quality materials in Construction and delivery par excellence "THE PRIDE" is now poised for a grand presence and to stay ahead of the time, both in terms of design distinction and construction supremacy. Away from the buzz of everyday life, yet well connected with every aspect of modern living, "The Pride" is located at the heart of Santhekatte, with a view of Swarna River. Planned to perfection, it is a fine blend of comfort & luxury that every Manglorean desires. With 7 floors height, "The pride" with its exhilarating features, majestic elevation & unmatched amenities brings you an experience & satisfaction never before.



## *Amenities*

- Earthquake resistant structures.
- Four wheeler parking for each flat.
- Fire fighting systems.
- Solar energy powered compound lights.
- Rain water harvesting.
- Generator backup for lifts, pumps, common area & lighting points in each apartment.
- Beautiful entrance lobby.
- 8 passengers automatic elevator.
- 24hrs water supply through municipality, Open well & borewell.
- centrally located & closer to collages, workship place, bus stand & hospitals.



## *Flat Interiors*

- Double polished vitrified tiles for bedroom & kitchen.
- Teakwood door for entrance & other doors are Mortise locked.
- Anodized aluminium sliding windows.
- Intercom system.
- cable TV & telephone outlets in living room & bedroom.
- Gas connection in every flat with common gas back facility (Reticulated Gas System).
- Granite Kitchen Platform with '4' high ceramic tile DADO.
- Separate plumbing & electrical points for washing machine in utility area.
- Wall finished with Wallcare Putty in Emulsion paints.

## *Sanitary*

- Non Slip / Anti skid flooring in bathrooms.
- Concept tiles DADO upto door height.
- Concealed plumbing
- Excellent quality sanitary fixtures by jaguar & RAK

## *Electrical*

- Fire resistant electrical wires & cables of Finolex or equivalent.
- Elegant modular switches of anchor or equivalent.

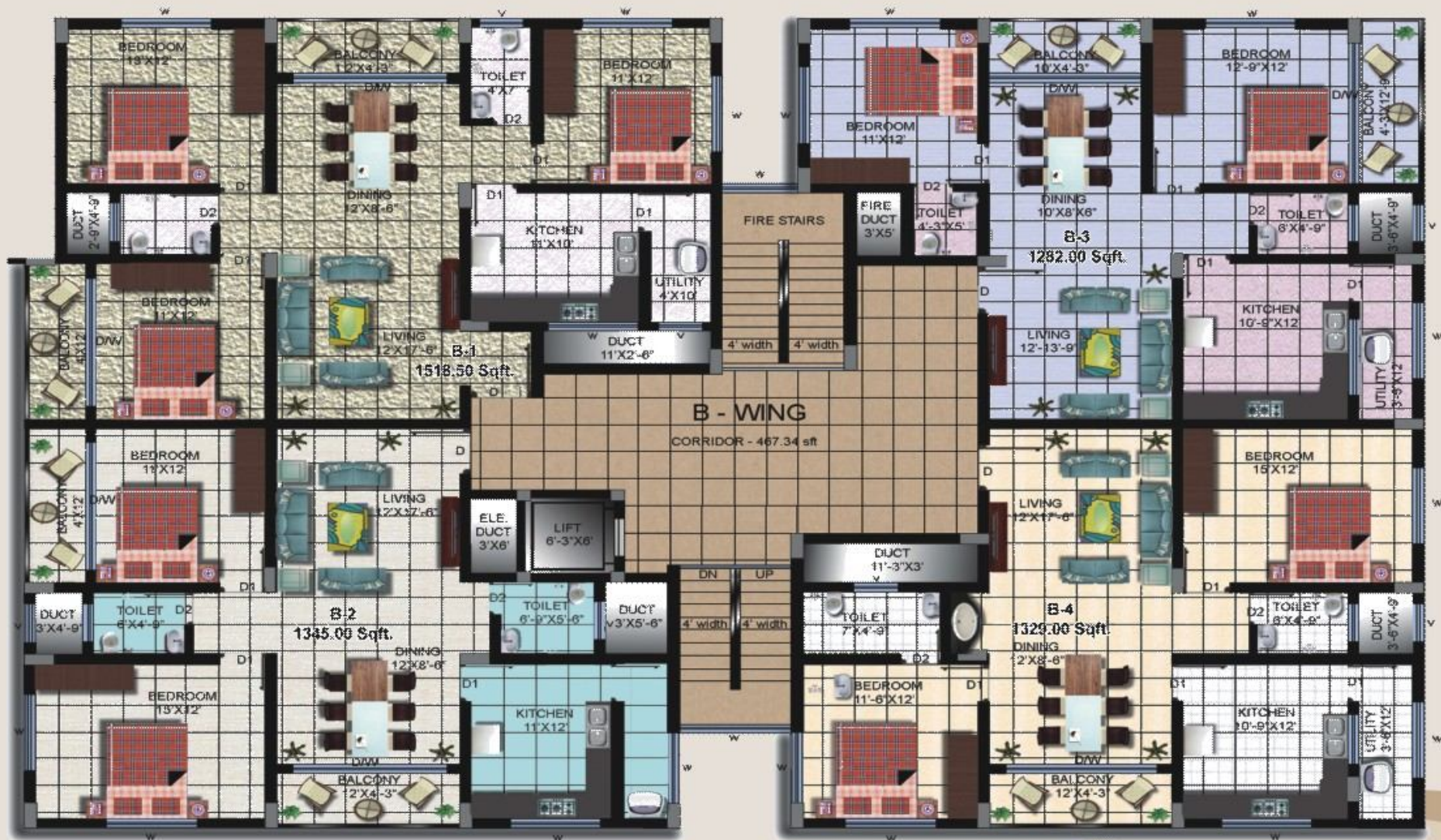
Quality that enhances your life.

# Floor Plan - A Wing





# Floor Plan - B Wing







3 BHK

### A WING

A1	3BHK	1573.25 Sqft.
A2	2BHK	1345.00 Sqft.
A3	3BHK	1626.50 Sqft.
A4	2BHK	1326.00 Sqft.

### B WING

B1	3BHK	1518.50 Sqft.
B2	2BHK	1345.00 Sqft.
B3	2BHK	1282.00 Sqft.
B4	2BHK	1329.00 Sqft.



2 BHK

### Accessibility

The Pride is surrounded by schools, Colleges, church Temple, Bus Stand, Banks, Shops & Weekly Market within the 1km radius.

On National Highway No 66, it is about 6 kms from Udupi, 6 kms from Malpe Beach & 66 kms from Mangalore.

Manipal Railway station is at 8 kms and Mangalore Bajpe Airport is at 60 kms.



Location Map



Site Address : The Pride, Near Mt. Rosary Church,  
Santhekatte, Karnataka - 576 105.





# The Pride



## **Promoters:**

Deepak & Associates,  
Engineers & Contractors, Upendra Tower,  
1st Floor, D.No- 2/9C, Santhekatte - 576 105.  
Office: 0820 2583495  
[www.deepakandassociatessanthekatte.com](http://www.deepakandassociatessanthekatte.com)

## **Co-Promoters:**

Celine Lewis & Ronson Lewis  
Santhekatte, Udupi - 576 105

## **Structural Engineer:**

Arun Shetty Mtech  
(struct), Nitte

## **Legal Advisor:**

Ganesh Achar  
Find Solutions, Bangalore

**Deepak T J Fernandes:** +91 98451 20431

**Ronson Lewis:** +91 99012 89302

**Devendra Naik:** +91 98451 48488

**Prashanth Kanchan:** +91 98453 54361